



UVF-TRILOGY ANALYZER

MODEL NO. 7200-004-FNGP

HYDROCARBON FINGERPRINTING & FORENSICS

DETECTS ALL TYPES OF PETROLEUM USING 4 UV MODULES!

APPLICATIONS:

- GRO • EDRO • PAHS • TPH OIL
- Oil and Fuel Forensic Analysis
- TPH Fingerprinting Identifies the Type or Age of Contaminates

UVF-Trilogy 7200-004-FNGP Includes:

- Blue GRO UV Module
- Yellow EDRO UV Module
- Red PAHS UV Module
- Green TPHOIL UV Module
- Power Supply & USB Cable
- Operating Instructions & Warranty
- Orange Tool Box with:
 - 1 Glass Cuvette with Case
 - Solvent Dispenser Bottle
 - Adjustable Micro-Pipette
 - 2 Metal Spatulas and Sharpie Markers
 - Box of Tissue Wipes
 - Soil Extraction Jar Shaker Can
 - Digital Scale with Batteries
 - Foam Test Tube Rack



Fluorescence UV Modules are fitted with LEDs and optical filters sensitive and selective to different types of hydrocarbons

8 Factory Calibrations: (examples shown below)

- EDRO-042M
- GRO-025M
- PAHS-060M
- TOTAL-PAH: for hydrocarbon fingerprinting
- TPH-057M
- TARGT-PAH: for hydrocarbon fingerprinting
- TPH-056H
- HEAVY-PAH: for hydrocarbon fingerprinting

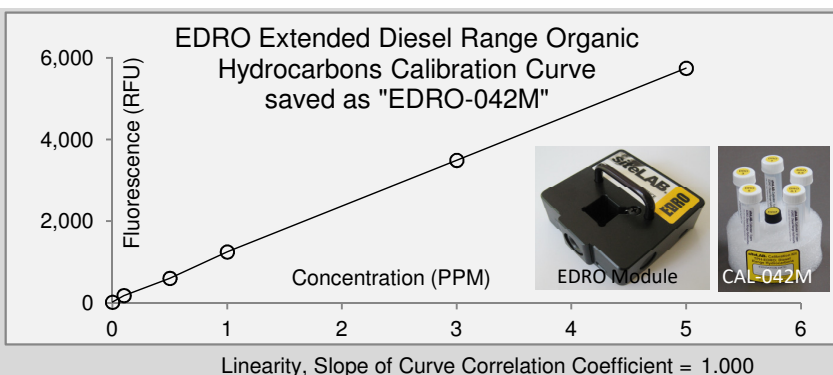
Calibration Kits and Sample Test Kit Supplies:

- Not included, sold separately. Available for soil, water or oil on metal. Use with methanol or hexane solvents.

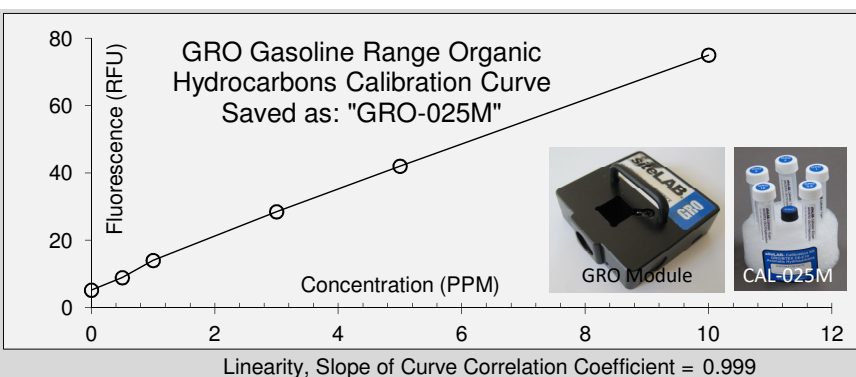


Cal Standard Conc. (ppm)	RFU Response (Voltage)
0	17
0.1	181
0.5	602
1.0	1,248
3.0	3,491
5.0	5,747

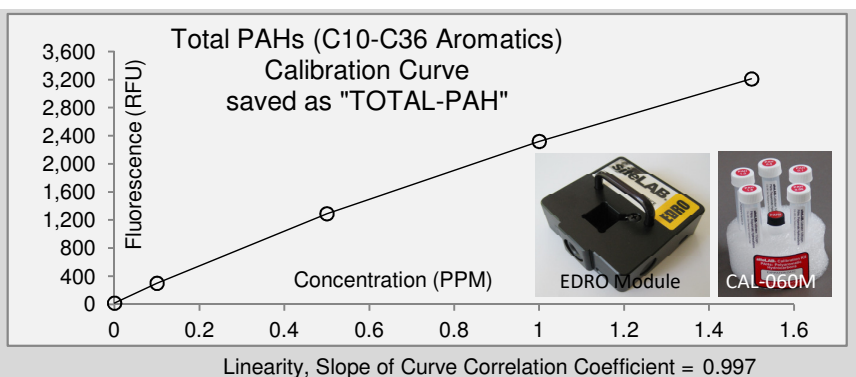
Calibration Kit:	CAL-042M
UV Module:	EDRO
Solvent Blank:	Methanol
Units:	PPM (mg/Kg)



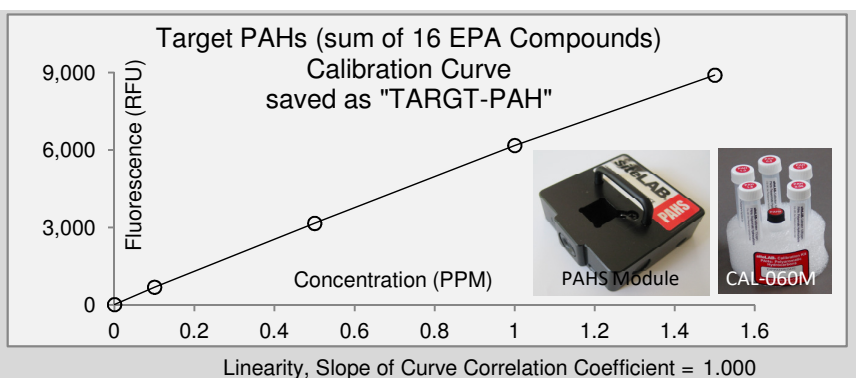
	Cal Standard Conc. (ppm)	RFU Response (Voltage)
	0	5
	0.5	9
	1.0	14
	3.0	28
	5.0	42
	10.0	75
Calibration Kit:	CAL-025M	
UV Module:	GRO (BTEX)	
Solvent Blank:	Methanol	
Units:	PPM (mg/Kg)	



	Cal Standard Conc. (ppm)	RFU Response (Voltage)
	0	17
	0.1	300
	0.5	1,290
	1.0	2,320
	1.5	3,210
	Calibration Kit:	CAL-060M
UV Module:	EDRO	
Solvent Blank:	Methanol	
Units:	PPM (mg/Kg)	



	Cal Standard Conc. (ppm)	RFU Response (Voltage)
	0	9
	0.1	684
	0.5	3,159
	1.0	6,180
	1.5	8,907
	Calibration Kit:	CAL-060M
UV Module:	PAHS	
Solvent Blank:	Methanol	
Units:	PPM (mg/Kg)	



	Cal Standard Conc. (ppm)	RFU Response (Voltage)
	0	300
	0.1	16,400
	0.5	77,300
	1.0	155,700
	1.5	240,000
	Calibration Kit:	CAL-060M
UV Module:	TPHOIL	
Solvent Blank:	Methanol	
Units:	PPM (mg/Kg)	

